

# HOUSES

NEW ZEALAND RESIDENTIAL ARCHITECTURE AND DESIGN

ISSUE 27 — \$11.90  
AUTUMN 2013

## COASTAL COOL

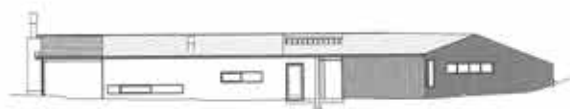
Houses from Auckland, Brick Bay, Nelson & Wanaka  
*+ four inspirational designer kitchens*







East elevation



West elevation

PROJECT

# 01

## *Brick Bay* HOUSE *by Glamuzina* *Paterson* *Architects*

• SNELLS BEACH •

Auckland practice Glamuzina Paterson has designed an effortlessly cool family house that is full of fun and fine form.

Words by [Claire Ellery](#)  
Photography by [Samuel Hartnett](#)





01 Looking at the view of Brick Bay from the living room.









02 The living room with sliding doors opened up to the outside lounge.

03 Looking towards the dining and kitchen area from the lounge.

In the house my parents built there was a shoulder-height brick wall dividing the open-plan living space. I liked to chart my progress towards coveted 'big-kid' status by how far I could reach the tips of my fingers up that wall. I remember the details of the house because children love details, and family homes should, I think, be full of memorable moments and thoughtful details.

This family house sits on a beautiful site around an hour's drive north of Auckland, with views over Brick Bay Winery and Sculpture Trail to the valley and water beyond. It was designed by Aaron Paterson and Dominic Glamuzina for their friend, and the builder of the house, Ryan O'Malley, and it is full of clever spaces and fun moments.

The driveway is a winding, steep ascent which – if you could afford to take your eyes off for even a moment – would allow you to see the full profile of the east elevation. The entry door is at the back of the house. Stepped ramps lead to a tiny entrance and the front door. These serve to heighten the drama when you step into the small hallway that looks straight onto the view of the valley past a glazed cut-out space – in the axis where the two wings of the house meet – that is home to a tall palm tree.


To the north of the entryway is the living area with kitchen, dining and a stepped-down lounge. It is a bright, open, light space with a white and timber palette. Sliding doors open to the front lawn on the east and a protected outdoor space at the northern end of the

living pavilion. The roof is continued from the lounge out to meet an outside wall that has a fireplace.

The other arm of the house – the bedroom wing – runs in a straight line towards the south-east. The axis corner contains a large family bathroom with a palette of white tiles that is offset with the warmth and unique texture of rough-hewn unfinished timber panels which make up the wall behind the vanity and mirror.

A long hallway runs from a guest bedroom at the western end to the master bedroom and ensuite – down a few stairs at the eastern edge of the building. Off the hallway are two children's bedrooms. The master bedroom has a small deck and from the bed the floor-to-ceiling sliders frame the view. A low window on the northern wall looks out onto the front lawn.

The head of the bed sits against a wall that replicates the rough timber finish of the bathroom. In this bigger space this decorative flourish is particularly effective. It is a unique way of personalising the space without being bound by current wallpaper trends or decorative items. Alongside the timber flooring it also means that the whole house has a really warm and welcoming feel, despite being nearly entirely composed of white walls and glazing.

The simple plan of this house, mixed with lots of clever, thoughtful moments that are executed with a light touch, makes it feel effortlessly chic. 





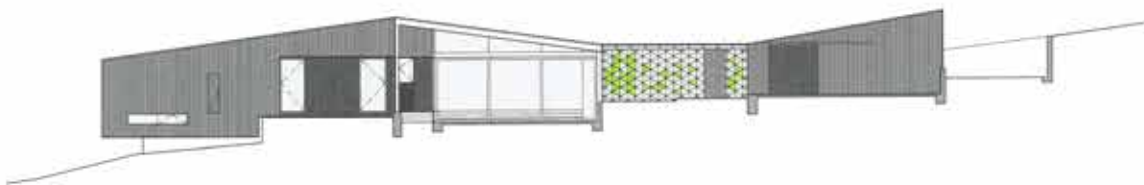


**04** The kitchen and dining space are open to the stepped-down lounge with fireplace.

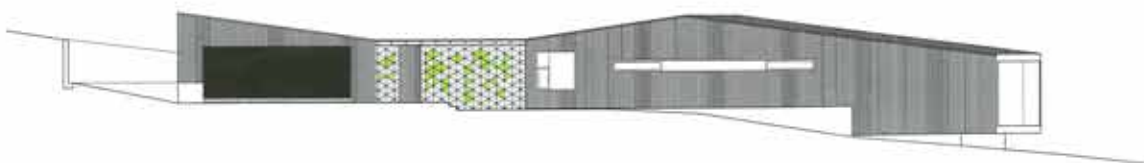
**05** The hallway in the sleeping wing.

**06** Exposed timber in the master bedroom and family bathroom creates texture and warmth.



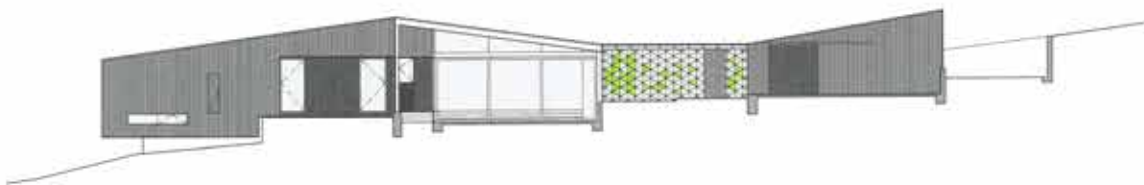


**North elevation**

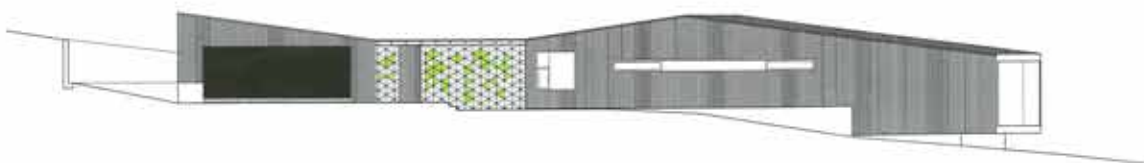


**South elevation**





**North elevation**



**South elevation**





07 Looking at the front of the house from the north-east side of the front lawn.

08 Views from the outside lounge with fireplace.







09 The view from the entry hall.

#### Practice

##### Glamuzina Paterson Architects

478 Karangahape Road  
Auckland 1010  
09 303 0255  
[www.gp-a.co.nz](http://www.gp-a.co.nz)

#### Practice profile

Glamuzina Paterson Architects is a design-focused architecture studio with a view to creating a critical and adaptive practice. Academic teaching and research enables us to develop strategies that inform projects and generate a dynamic design language. We learn from the unique territories inherent in each project and the unexpected outcomes that emerge.

**Project team:** Aaron Paterson;  
Dominic Glamuzina

**Engineer:** Ashby Consulting  
Warkworth

#### Builder

Ryan O'Malley – Little Tree  
Construction

#### Products

**External walls:** Macrocarpa  
board-and-batten

**Internal walls:** Concrete  
block

**Flooring:** Tasmanian oak interior  
floor; Vitex decking

**Windows and doors:** APL

**Ceiling:** Sarking boards

**Roofing:** Corrugated iron

**Bathroom:** Metrix

**Lighting:** Lighthouse Albany

**Furniture:** Client design

#### Time schedule

**Design and planning:** 9 months

**Construction:** 12 months

#### Project areas

**Site size:** 2 hectares

**Building areas:**

**House** 240m<sup>2</sup>

**Garage** 60m<sup>2</sup>